

**HARRELL & CO ARCHITECTS**  
 2241 EAST TAMiami TRAIL SUITE 4  
 NAPLES FL USA 34112 AA 0002700  
 239 435 1250 F 239 732 7048  
A. JEFFREY HARRELL ARCHITECT  
 COPYRIGHT 2023 HARRELL & COMPANY ARCHITECTS - FLORIDA, INC.  
 ALL RIGHTS RESERVED







## SCHEMATIC WEST ELEVATION SKETCH

COPYRIGHT 2023  
HARRELL & CO ARCHITECTS  
ALL RIGHTS RESERVED

HARRELL & CO ARCHITECTS

2241 EAST TAMiami TRAIL SUITE 4  
NAPLES FLORIDA 34112 AA 0002700  
PH 239 435 1250 FAX 239 732 7048 WWW.HARRELLARCHITECTS.NET



NEW ERA RESIDENCE  
1747 HARBOR LANE  
NAPLES, FLORIDA





## SCHEMATIC EAST ELEVATION SKETCH

COPYRIGHT 2023  
HARRELL & CO ARCHITECTS  
ALL RIGHTS RESERVED

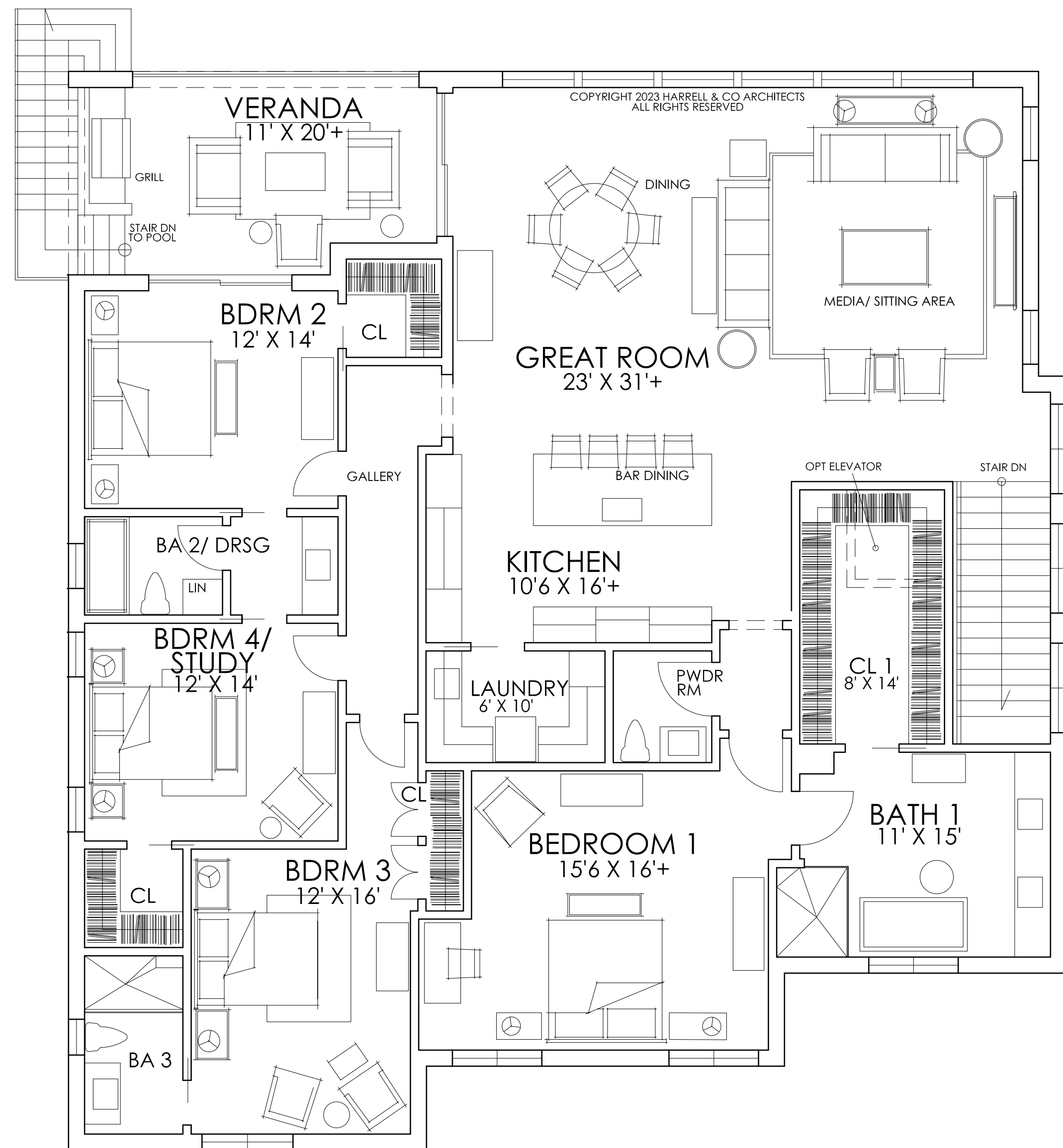
HARRELL & CO ARCHITECTS

2241 EAST TAMiami TRAIL SUITE 4  
NAPLES FLORIDA 34112 AA 0002700  
PH 239 435 1250 FAX 239 732 7048 WWW.HARRELLARCHITECTS.NET



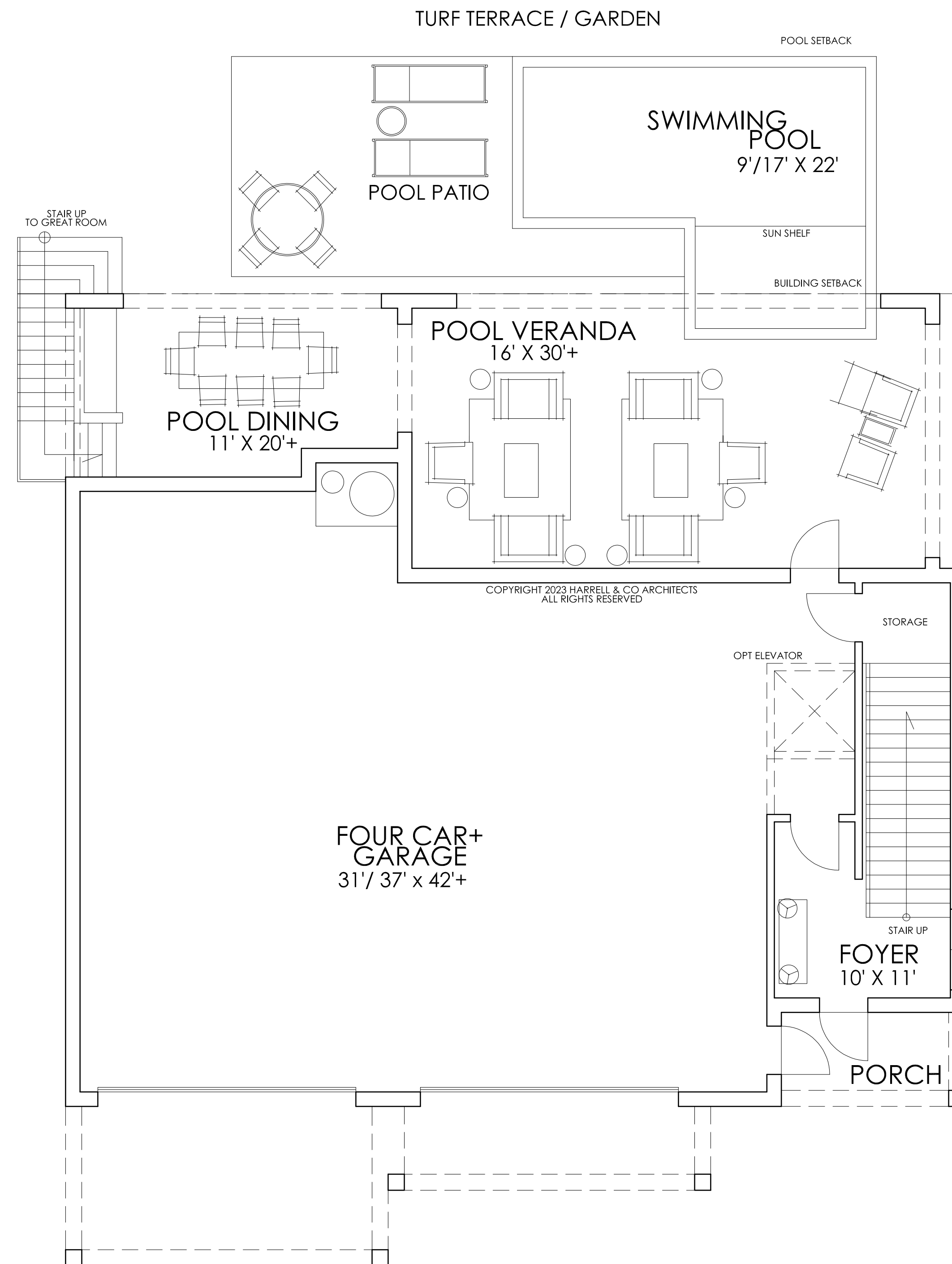
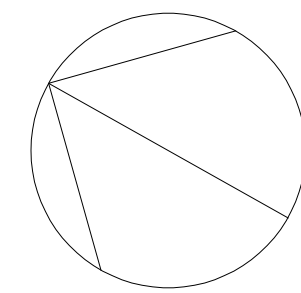
NEW ERA RESIDENCE  
1747 HARBOR LANE  
NAPLES, FLORIDA





### SECOND FLOOR PLAN (MAIN LIVING LEVEL)

AREA CALCULATIONS	
FIRST FLOOR LIVING	1,155 SQ FT
SECOND FLOOR LIVING	2,862 SQ FT
TOTAL LIVING	3,017 SQ FT
COVERED EXTERIOR	1,379 SQ FT
GARAGE	1,772 SQ FT
<b>TOTAL UNDER ROOF</b>	<b>6,189 SQ FT</b>



### GROUND FLOOR PLAN

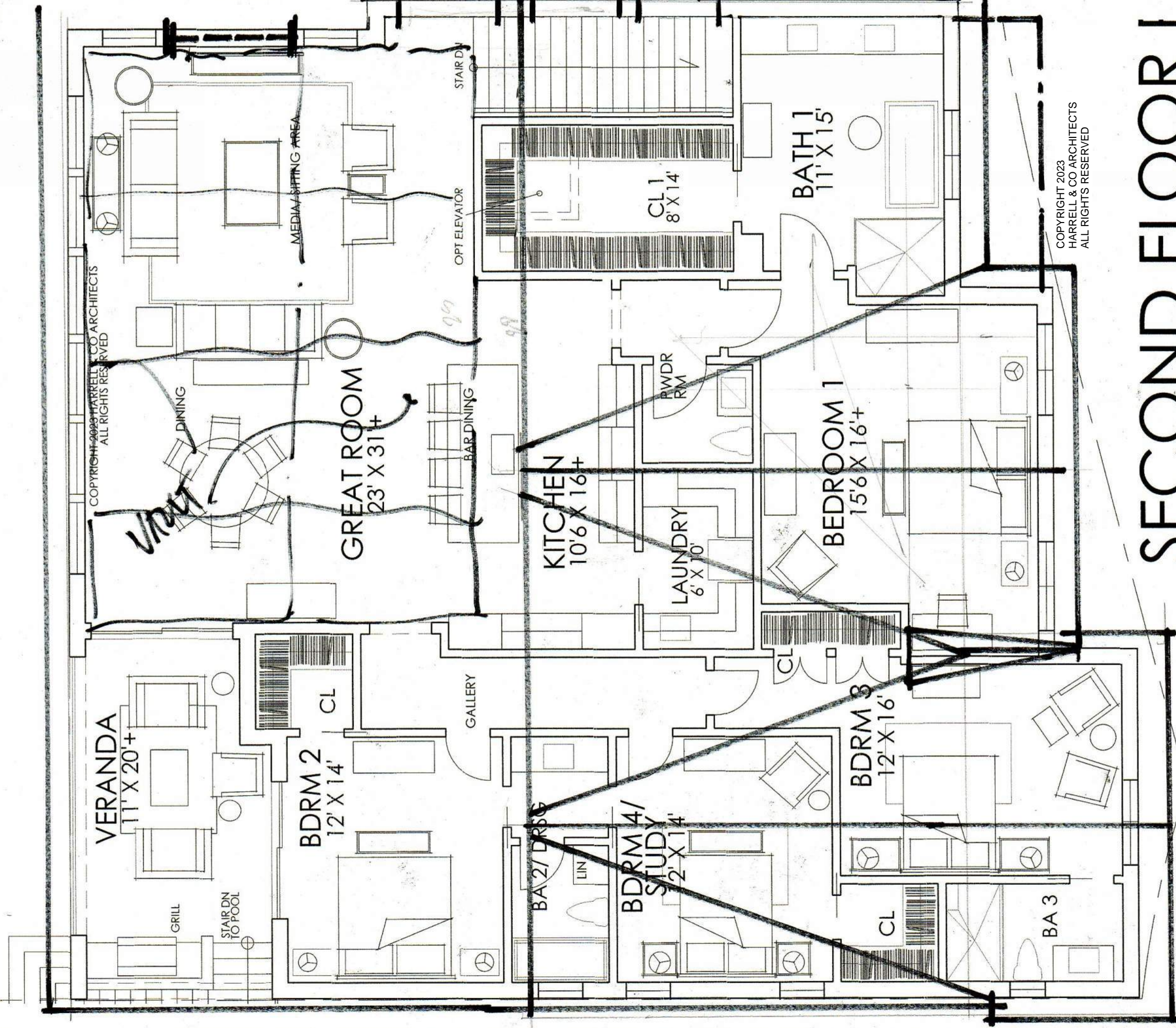
CUSTOM RESIDENCE AT 1747 HARBOR LANE  
 AT 1747 HARBOR LANE NAPLES FLORIDA  
 FOR NEW ERA COSTRUCTION



**HARRELL & CO ARCHITECTS**  
 2241 EAST TAMiami TRAIL SUITE 4  
 NAPLES FL USA 34112 AA 0002700  
 239 435 1250 F 239 732 7048

A. JEFFREY HARRELL AR0012615  
 COPYRIGHT 2023 HARRELL & COMPANY ARCHITECTS - FLORIDA, INC.  
 ALL RIGHTS RESERVED





COPYRIGHT 2023 HARRELL & CO ARCHITECTS  
ALL RIGHTS RESERVED

COPYRIGHT 2023  
HARRELL & CO ARCHITECTS  
ALL RIGHTS RESERVED

# SECOND FLOOR I

(MAIN LIVING LEVEL)

*HARREL floor plan*



HARRELL & CO ARCHITECTS  
2241 EAST TAMiami TRAIL SUITE 4  
NAPLES FLORIDA 34112 AA 0002700  
PH 239 435 1250 FAX 239 732 7048 WWW.HARRELLARCHITECTS.NET